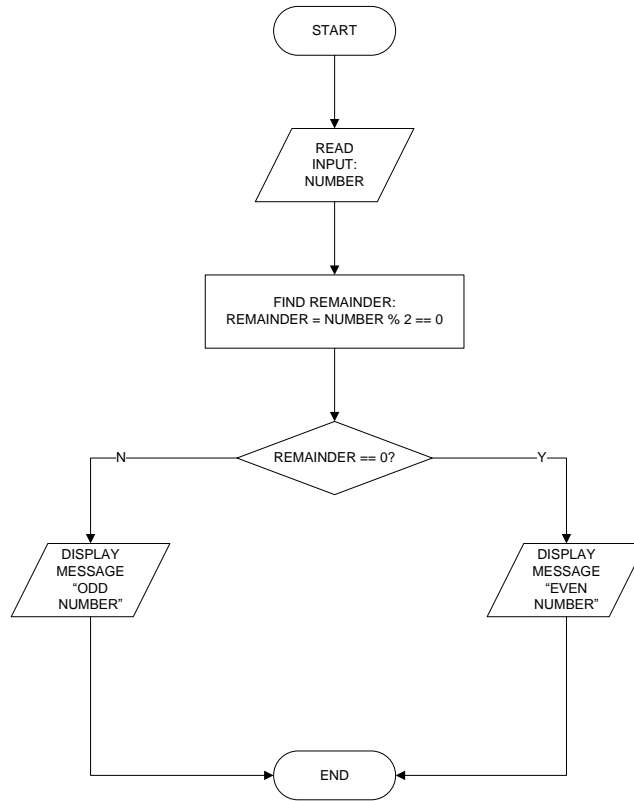


Two-Way Selection (Simple Selection OR Combined Selection)

1. Create a full C++ program that able to determine the input is even or odd number. Create a flowchart and then a full program.

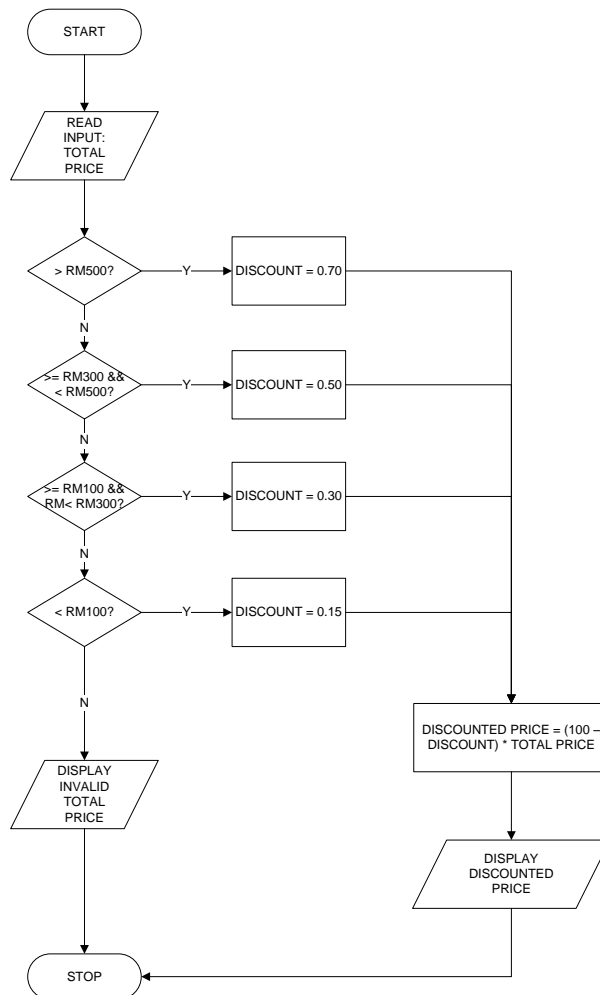


Multiway Selection (Linear nested if statement)

2. MPH Bookstore will organize super sale event. Every purchase items will get discount. Create a flowchart and full C++ program. Please refer Table 1.0 for range of discount. Display invalid total price if user enters invalid input.

Table 1.0: Discount table

Total Price	Discount
>= RM500	70%
RM300 – RM499	50%
RM100 – RM299	30%
< RM100	15%



Multiway Selection (Non-Linear nested if statement)

3. MPH Bookstore will organize super sale event. Every purchase items will get discount. Discount is given according to member and non-member. Please refer Table 1.0 for range of discount for member and non-member. Create a flowchart and full C++ program. Display invalid total price if user enters invalid input.

Table 1.0:

Member		Non-Member	
Total Price	Discount	Total Price	Discount
>= RM500	70%	>= RM500	60%
RM300 – RM499	50%	RM300 – RM499	40%
RM100 – RM299	30%	RM100 – RM299	20%
< RM100	15%	< RM100	10%